

# Paradise Sonoma Conservation District Humboldt County, Nevada



## Mimicking Nature- Let water do the work!

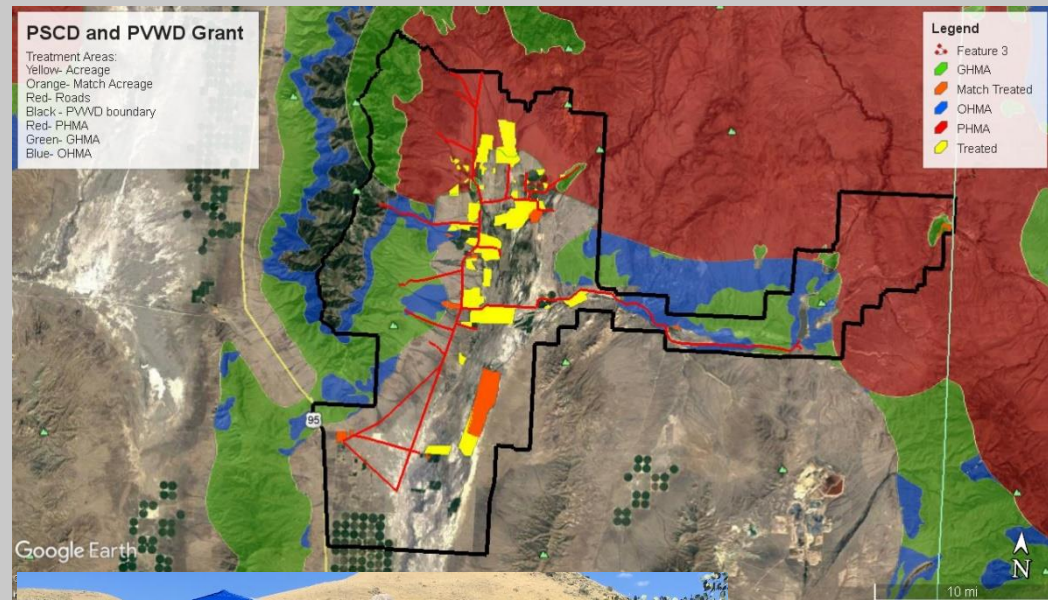
Working with Nevada Division of Forestry crews to build a “beaver dam analog”. We try to replicate what a real beaver dam would do. They are critical in many of Nevada’s watersheds to prevent erosion, capture sediment, and restore water holding capacity in streams and actually re-connect streams and floodplains.



Provide monitoring and verified planners for State Conservation Credit system which helps to preserve sage grouse habitat while supporting ranching stewardship.



Collect field data alongside partners to address wildfire concerns and restoration potential.



Planning map identifies important strategies to treat noxious and invasive weeds, address critical sage grouse, Pygmy rabbit and mule deer habitat, and identify opportunities for native plant restoration and reducing fire risks within the Conservation District boundary.



Local community workshops with subject matter experts such as the Natural Resource Conservation Service, Nevada Department of Wildlife, Dept. of Ag and others address natural resource concerns including fire restoration, invasive weed control, and other issues of concern within the Conservation District.



Collaboration with partners such as the University of Nevada Reno, Nevada Division of Forestry, Nevada Department of Wildlife, Department of Conservation and Natural Resources, Society for Range Management and others provide field training in rangeland monitoring, wildlife habitat monitoring, riparian health indicators.