

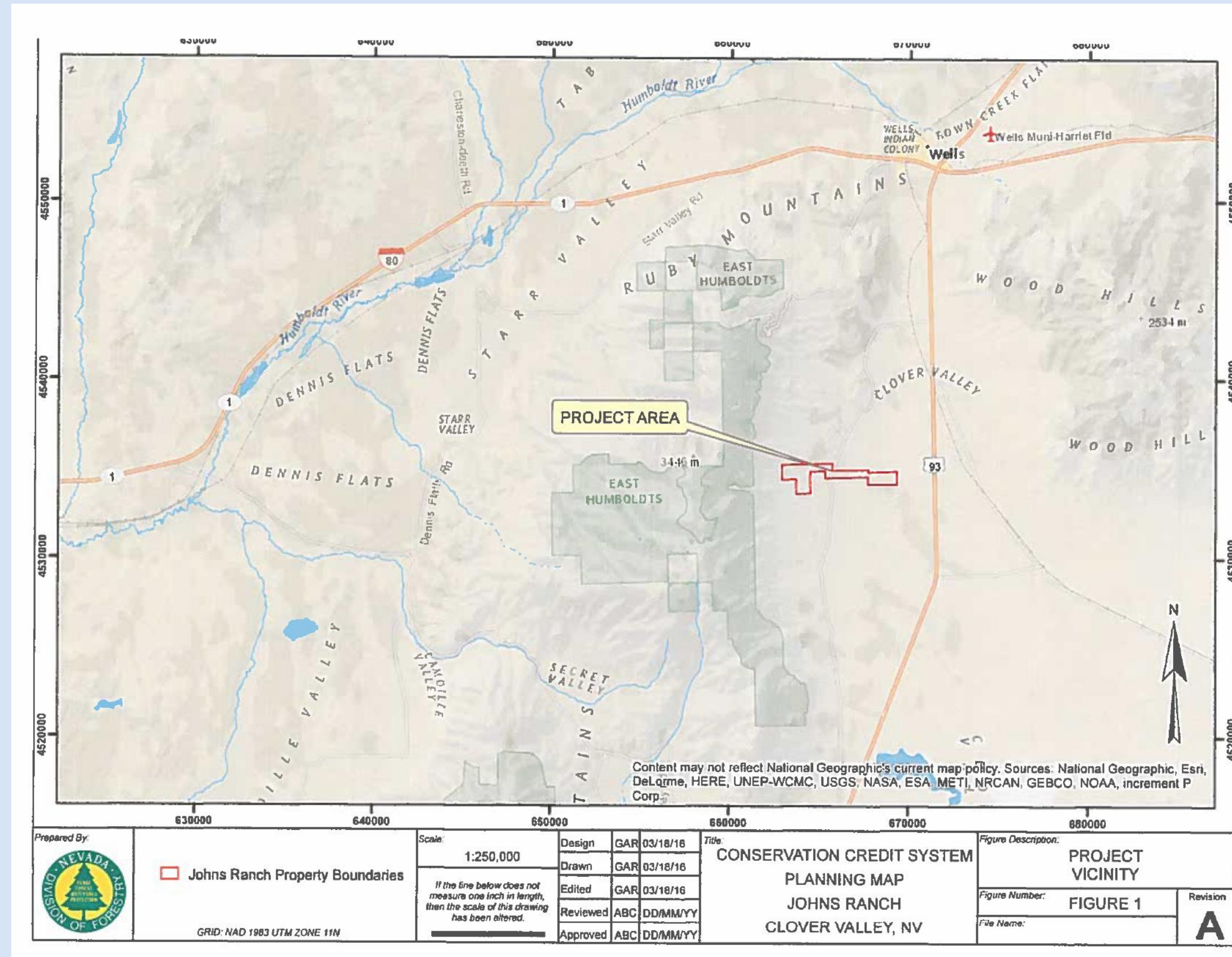
CLOVER VALLEY CONSERVATION DISTRICT ELKO COUNTY



Private Lands Benefit Sage Grouse



The Johns Ranch has two active sage grouse leks and numbers of birds counted each spring are remaining stable. This ranch is important for a variety of wildlife which all benefit from the management plan developed for the conservation credit system.



The John's ranch located in Clover Valley, South of Wells, Nevada which has been in the Johns family for nearly a hundred years was the very first enrollment into the Nevada Conservation Credit System. The Conservation District is a sponsor and a percentage of every conservation credit sold is returned to the Conservation District for their operating funds

Monitoring involves five pre-established photo monitoring points, sampling 5 plots on a 50 meter transect and Proper Functioning Condition along a reach of stream each year. Monitoring on 50 transects will occur on fifteen year intervals for perpetuity. Wildlife monitoring includes Sandhill Crane nesting sites, red tail hawk nests, waterfowl/shorebird and mule deer use of the property.

Native Clover in Meadows increase pollinator success



Telling the story ! Generations across decades will be part of the monitoring and maintenance of this project.

